

FRANKLIN EXCHANGE

633 & 655 N. Franklin Street | Tampa, Florida 33602

Tampa's Premier Location



CARTERSM

FRANKLIN EXCHANGE

633 & 655 N. Franklin Street | Tampa, Florida 33602

Current Availability

655 N. Franklin (211,244 RBA)

Floor	RSF
11th	13,756
14th	13,756
15th	13,756
16th	13,756
17th	13,756
18th	13,756
19th	13,756
20th	13,756
BSMT	8,562

633 N. Franklin (53,919 RBA)

Floor	RSF
2nd	4,064
3rd	10,128
5th	4,342
6th	4,883
7th	3,521

All above space can be divided or are contiguous.

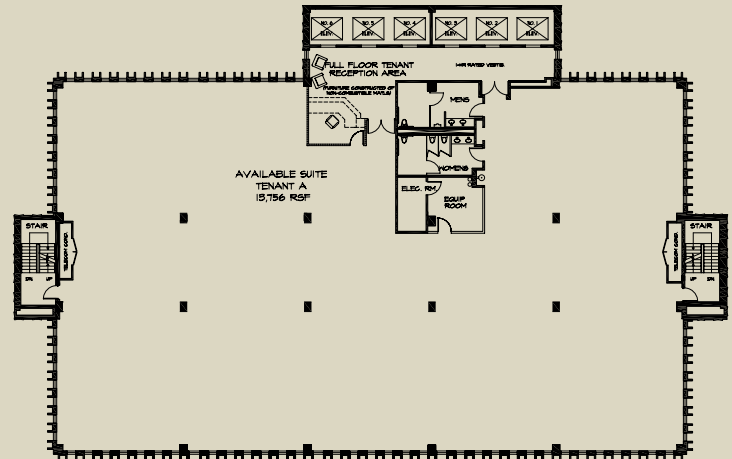


SUITE 300 - FLOOR PLAN

SCALE: NOT TO SCALE
APPROXIMATELY 10,128 RSF



ALL ROOM SIZES ARE APPROXIMATE



UPPER TOWER LAYOUT - FULL FLOOR TENANT
FRANKLIN EXCHANGE
655 N. FRANKLIN STREET
TAMPA, FLORIDA 33602

SCHEMATIC PLAN
SCALE: NOT TO SCALE

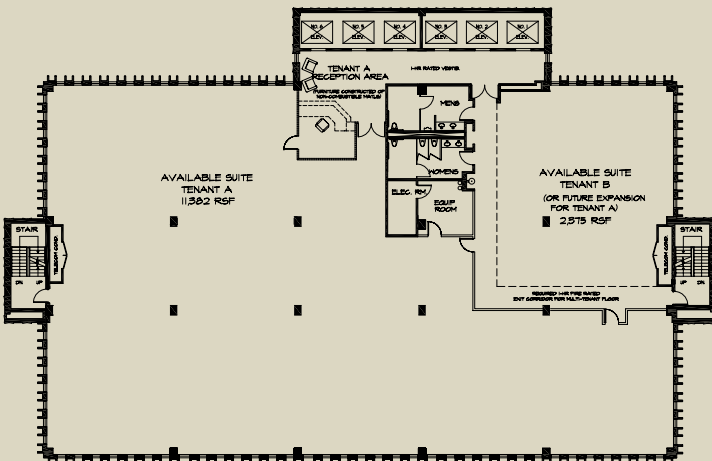
DATE: 10/20/07

PROJECT: FRANKLIN EXCHANGE

DESIGNER: WDA DESIGN GROUP INC.



WDA DESIGN GROUP INCORPORATED
5307 FLETCHER AVENUE, TAMPA, FLORIDA 33617
TELEPHONE 813.988.2800 FAX 813.988.2802
E-MAIL: WDA@WDADESIGN.COM



UPPER TOWER LAYOUT - TENANTS A & B
FRANKLIN EXCHANGE
655 N. FRANKLIN STREET
TAMPA, FLORIDA 33602

SCHEMATIC PLAN
SCALE: NOT TO SCALE
ALL ROOM SIZES ARE APPROXIMATE

DATE: 10/20/07

PROJECT: FRANKLIN EXCHANGE

DESIGNER: WDA DESIGN GROUP INC.



WDA DESIGN GROUP INCORPORATED
5307 FLETCHER AVENUE, TAMPA, FLORIDA 33617
TELEPHONE 813.988.2800 FAX 813.988.2802
E-MAIL: WDA@WDADESIGN.COM



Located in the heart of downtown Tampa, the Franklin Exchange Building is a landmark on the Tampa Skyline. The building's design provides attractive amenities to tenants such as secured garage parking, an outside garden, beautifully updated lobby and advanced fiberoptic wiring for faster networking and internet access. Franklin Exchange is close to Channelside, Ybor City, the best eating establishments in Downtown, as well as, minutes from I-4 and Tampa International Airport.





Leasing Information

Thomas Hernandez

thernandez@carterusa.com

813.387.0875

Tampa's Downtown Vision

The vision of downtown Tampa is to reinforce and expand its role as the primary business, government, cultural, entertainment, and activity center of the Tampa Bay Metropolitan Area. The focus is the development of a variety of residential neighborhoods throughout downtown Tampa that ease live/work/play relationships and return people to the streets of downtown Tampa in the evenings. The vision includes revitalization of downtown Tampa's waterfront edge as a unique people place, while adding more parks and usable open space to downtown destinations. The vision is to make downtown Tampa truly the place people want to live, work, visit, and enjoy.

